



1015 Brice St. Newark, Ohio 43055  
Office 740-322-6355 Fax 740-322-6358

## EZ-Up/ KD Canopies

### Canopy Site Evaluation & Preparation

For each canopy installation, the installer is solely responsible for evaluating the suitability of the canopy site.

Main Events Party Rental EZ-Up/ KD canopies are designed for installation on grass. For installation outdoors on asphalt or concrete surfaces, sandbags are strongly recommended for anchoring the canopy. Sandbags are not provided by Main Events Party Rental and are the responsibility of the customer.

#### Choosing a Site

Select an area where ground and rainwater will flow away from the canopy and not collect in the area of the canopy. Keep in mind the height of the canopy and avoid areas where overhead wires or tree branches would touch the canopy.

#### Site Preparation

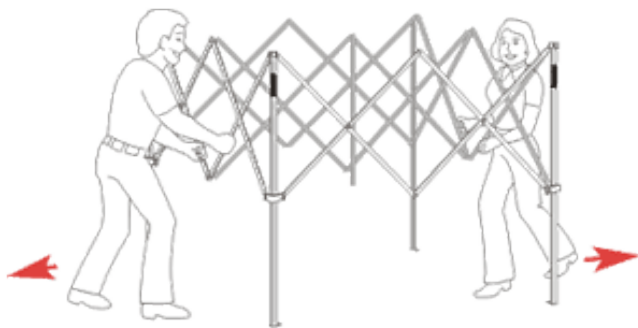
Clear the site of any debris and trim back any tree branches that may be in the way. Mow the lawn if necessary.

### Beware of Severe Weather

It is the responsibility of the canopy installer/ maintainer to determine the severity of the weather, proper time and method of installation and disassembly. Evacuation of the canopy is recommended at any time weather becomes inclement.

**Remember! A successful event is a safe event.**

### Assembly Instructions



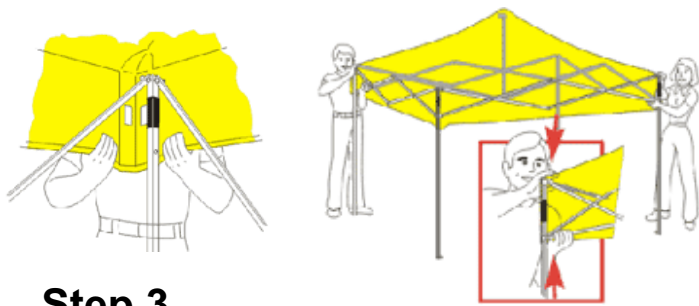
#### Step 1

With 2 people standing opposite each other, expand the canopy legs while taking a step back.



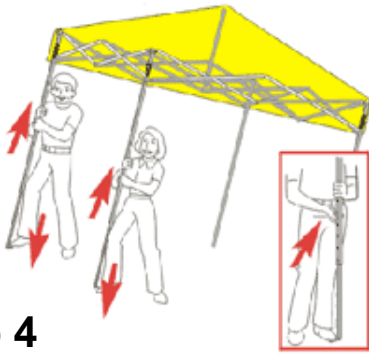
#### Step 2

With both people holding a leg, on the same side, guide the SLIDERS halfway up the legs. The unit will continue to expand fully when this is done. Do the same for the other side. Place top on frame if it is not already attached.



### Step 3

Pull the SLIDERS up, and they will LOCK INTO PLACE.



### Step 4

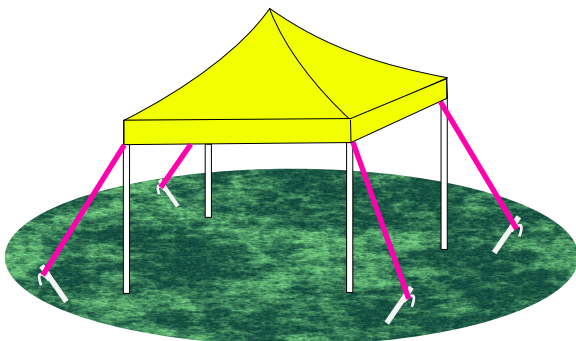
Once the sliders are locked into place, and before you extend the unit to full height, put the FABRIC TOP on the unit. The skin has 2 VELCRO STRAPS at each corner. One strap goes UNDER THE CORNER, and the other goes UNDER THE SLIDER.



### Step 5

With the top secured in place, extend the legs to desired height. STAKE THE UNIT DOWN, thru the STAKE PLATES.

It is **VERY IMPORTANT** that you **SECURE THE CANOPY PROPERLY**. Stakes are provided for anchoring the canopy in the ground. Use all of the stakes provided and drive them into the ground as shown in the diagram.



## Caution!

Do not leave the canopy unattended for long periods of time. Periodically check the stakes or fasteners to make sure that they are secure. Make sure that upright frame sections have not sunk or twisted due to soft, wet ground after periods of heavy rain. Be sure that the fabric is taut on the frame to avoid water pockets that may cause structural damage. **TAKE THE UNIT DOWN BEFORE PERIODS OF HIGH WINDS TO AVOID DAMAGE & LOSS.** This canopy is not designed to hold snow load.

## Warning!

DO NOT have fire or open flame close to the fabric.  
DO NOT use barbecues or griddles under the canopy.

## Cleaning Instructions

Wash the canopy fabric with water. We recommend washing the canopy while it is still on the frame. **DO NOT** put the fabric in your washing machine, clothes dryer or scrub it with a stiff brush, scouring pad or an abrasive cleaner.

## Packing

When disassembling the canopy, leave canopy top on frame before folding up the frame. Place protective bag over canopy.

## No Colored Crepe Paper or Streamers Please!

The use of colored crepe paper, streamers as well as other colored materials has a tendency to cause unremovable stains on canopies. This causes the canopies to be seriously downgraded. ***Under no circumstances should any colored material be in contact with any part of the canopy.***

## Equipment Responsibility

Store equipment in a secure and protected place when not in use. Damaged items will be charged at full replacement cost price to the customer. Refunds are not issued for rentals items returned unused.

*If you have questions with the operation of this equipment, we can be reached at 740-322-6355 during normal business hours,*

**THANK YOU FOR RENTING FROM  
MAIN EVENTS PARTY RENTAL.  
HAVE A TERRIFIC EVENT**